

Lion Carbon



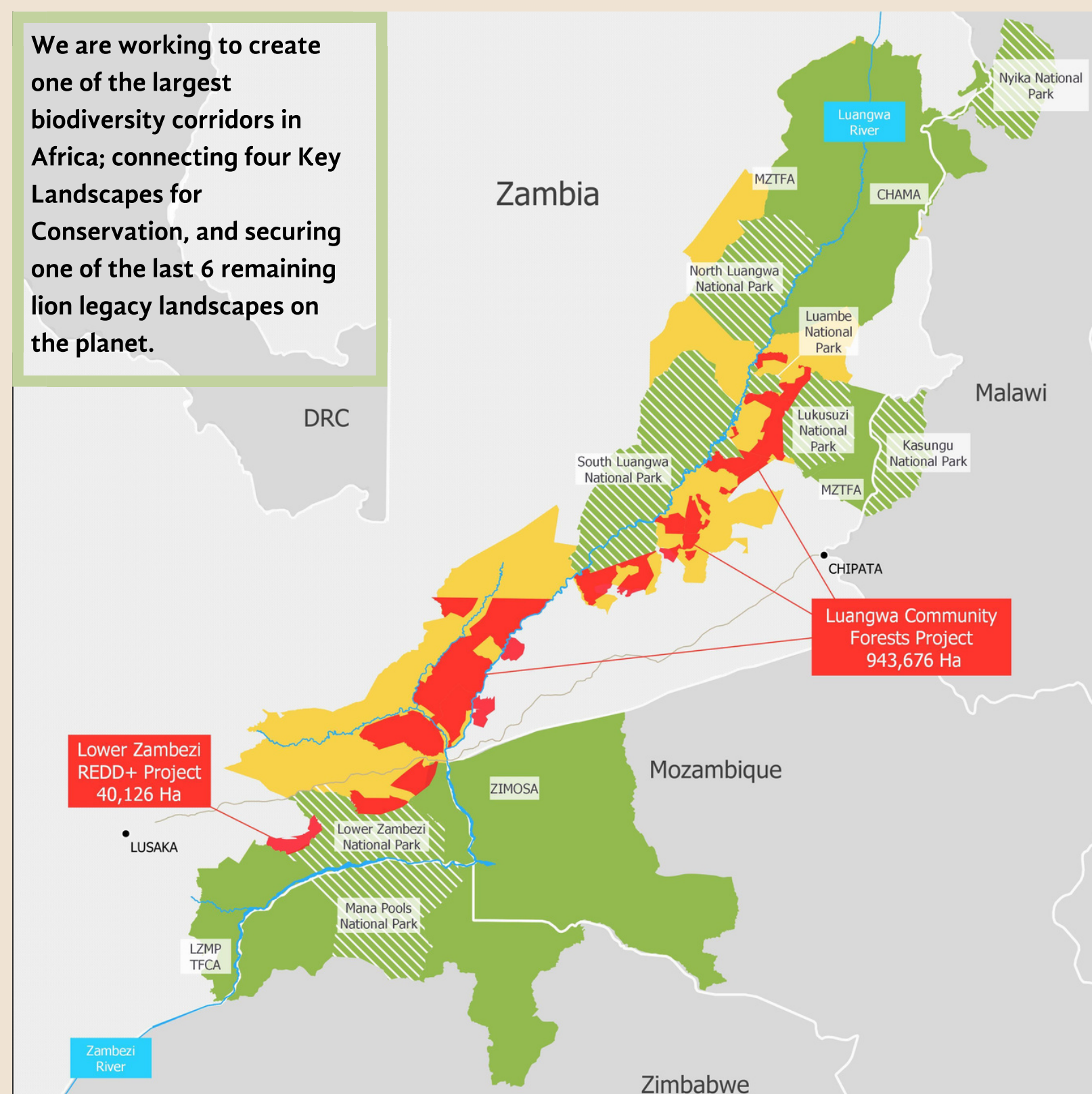
Making forests and wildlife more valuable to local people

The Mission

Lion Carbon's mission is to make biodiversity, including the largest carnivores, valuable to local communities, and increase their capacity to sustainably manage that biodiversity.

How Lion Carbon Works

Sustainable income for local communities, linked to the conservation of their forests and wildlife, is generated through the REDD+ (Reducing Emissions from Deforestation and Degradation) mechanism. At the same time, local and regional capacity to sustainably manage wildlife and forests is increased through proper management planning, anti-poaching, and monitoring.

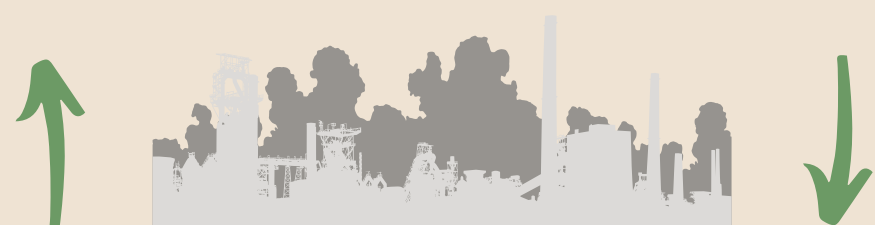


The BCP REDD+ Model for Lion Carbon



Step 5: Revenue from the sales of Lion Carbon Offsets is invested back into sustainable community development and the monitoring, protection, and regeneration of lion, their prey, and habitat

Step 4: BCP sells Lion Carbon Offsets to businesses



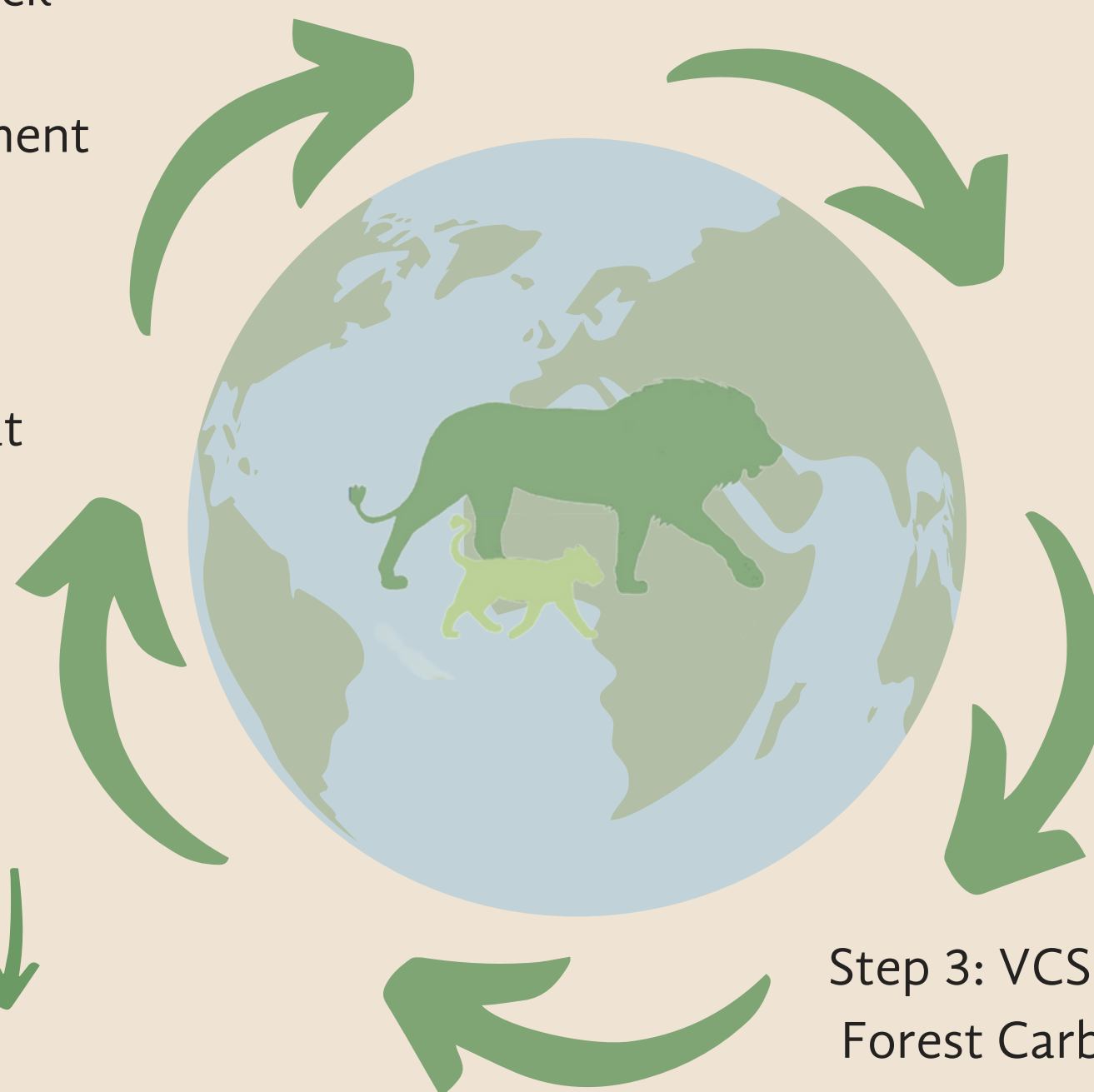
Businesses can offset their carbon emissions and do a TON of good



Step 1: Communities select forests they would like to protect through long term binding agreements



Step 2: The carbon that is stored in the community protected forest and NOT released into the atmosphere is measured and verified through the Verified Carbon Standard (VCS)



Step 3: VCS issues verified Forest Carbon Offsets based on the performance of the community in protecting their forest.



BCP Impacts:

- Through community partnerships, BCP supports 224, 622 Beneficiaries across 13 Chiefdoms in Lusaka and Eastern Province through the LZRP (Lower Zambezi REDD+ Project), and the LCFP (Luangwa Community Forests Project)
- Directly impacting 37,437 Households impacted at a HH level
- BCP invested over \$27,000 in Livelihood projects in LZRP
- 105 BCP Supported, and DNPW trained Community Scouts, to enhance resource protection achieving an average of 10,000 man-days per year.
- Supporting 251 Lead Farmers and 6,275 Follow Farmers, who are leading the way in conservation farming. Using Climate-Smart farming methods is key to reduce unsustainable farming methods that result in wildlife habitat loss
- In 2020 12 Chiefdoms in LCFP received a total of \$4.4 million in direct payments through revenue generated from Forest Carbon Fees
- Protecting 533, 928, 184 Trees across almost 1 million hectares of protected forest
- To date BCP had reduced a total of 7 million tons of carbon emissions, which is the equivalent of removing 290,000 cars annually from the road
- Through BCP's Government fund, \$114,000 was invested into the Forestry Department and Department of National Parks and Wildlife's resource protection and community engagement activities in 2020
- BCP has sold a total of 5,478,878 tons of Carbon Offsets

Why Choose Lion Carbon?

Additional revenue from Lion Carbon will support community-based activities that ensure a future for wildlife as well as forests in the Game Management Areas. These activities form 3 pillars:

1

Security

Protect existing wildlife biodiversity through anti-poaching activities



2

Regeneration

Increase wildlife biodiversity through active introductions



3

Monitoring

To inform the adaptive management of all wildlife conservation efforts

Lion Carbon Funding

Community and government agreements and the mechanisms to manage all REDD+ forest carbon operations have already been developed by the BCP team through a US\$14 million USAID Community Forests Program grant given in 2014. This includes the verification and sale of REDD+ forest carbon offsets and mechanisms for the distribution of income from these sales to local communities.

Direct lion conservation activities are currently supported by The Lion Recovery Fund, Darwin Initiative, Nat Geo's Big Cat Initiative, and Disney. They will be increasingly matched and then exceeded by funds generated from the sale of REDD+ Carbon Offsets as part of this project until operations are entirely self-sustaining.



**Lion
Recovery
Fund**



**NATIONAL
GEOGRAPHIC**

**BIG CATS
INITIATIVE**



**UNIVERSITY OF
OXFORD**

BCP™